



中国建材

Sinoma 中材建设有限公司
CBMI Construction Co., Ltd.



Reliable Global EPC Contracting Partner

CONTENTS

03/11

I. Company Profile

Company Introduction
Company Strategy
Organization Chart
HR and Sales Revenue
Finiancing Ability
Main Customers
Business Scope

12/27

2. Ability and Certificate

Technology Development
Digital Design
Fabrication
Equipment Integrating
Procurement
Logistics
Civil Engineering
Steel Structure Erection
Mechanical Erection
Electrical Installation
Refractory and Insulation
General Layout Engineering
Operation and Commissioning
After-Sale Service
Certificates

28/29

3. Safety, Environment and Health

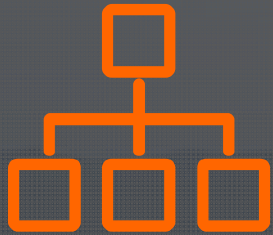
30/31

4. Social Responsibility

32/44

5. Reference List

1



Company Profile



Company Intro.

CBMI Construction Co., Ltd., established in 1959, is affiliated to Sinoma International Engineering Co., Ltd.(Stock Code: 600970) which belongs to China National Building Materials Group Corporation (Fortune Global 500 with annual turnover 50 billion USD). As a goal benchmarking enterprise, company provides quality engineering services to customers in multiple industries, actively participates in the construction of "One Belt One Road". CBMI has so far built more than 150 projects in 37 countries. CBMI Construction Co., Ltd. is a globally recognized and trusted contracting partner.

As a pioneer and leading enterprise of "going out" strategy and EPC general contracting mode in the construction industry of China, CBMI has the capacity to carry out over 3 billion dollars investment and more than 20 projects around the world at the



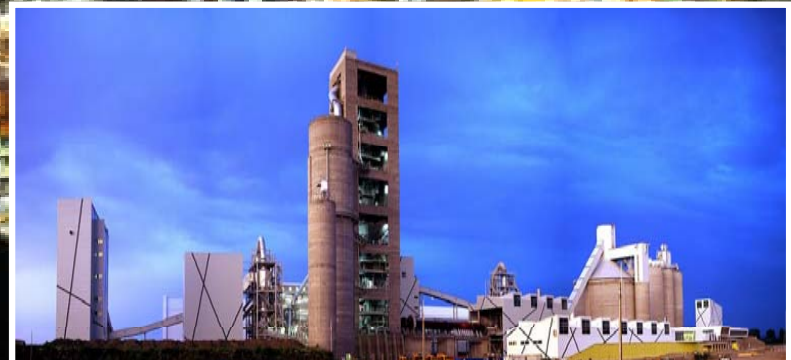
First cement EPC project of China :
Lafarge Dujiangyan Project



China Luban Award project
Bulgaria DEVNYA Project



First overseas cement EPC project:
Dominica Colacem Project



The most beautiful cement plant in the world :
Hungary NOSTRA Project

Company Strategy

As a global engineering construction service provider, CBMI Construction Co., Ltd., has always been based on the concept of integrity, pragmatic style and scientific management, continuous innovation and dedicated service, striving to build quality projects, to maximize the value of owner investment.

The development orientation of CBMI is: adhere to "innovative, international and value-oriented ", take project contracting as the leading business, vigorously promote related diversified development, take scientific and technological innovation and management innovation as methods, strive to build enterprise into a international first class comprehensive construction company.

Organization Chart

Company Management

Headquarters Departments

Localized Branches

Technology Center

Procurement, Logistics
Department

Project Management
Department

BU (Business Unit)

Nigeria Branch

Algeria Branch

Zambia Branch

Kenya Branch

Uganda Branch

South Africa Branch

Saudi Arabia Branch

Malaysia Branch

Philippines Branch

Russia Branch

人员构成与销售收入

HR and Sales

Revenue



Management	654
Designer	236
Marketing	24
Others	44

Sales Revenue 2018	535MUSD
Sales Revenue 2017	445MUSD
Sales Revenue 2016	370MUSD
Overseas Percentage	94.42%

Financing Ability



Sinoma 中材建设



中国建设银行
China Construction Bank



交通银行
BANK OF COMMUNICATIONS



中国银行
BANK OF CHINA



中国出口信用保险公司
CHINA EXPORT & CREDIT INSURANCE CORPORATION

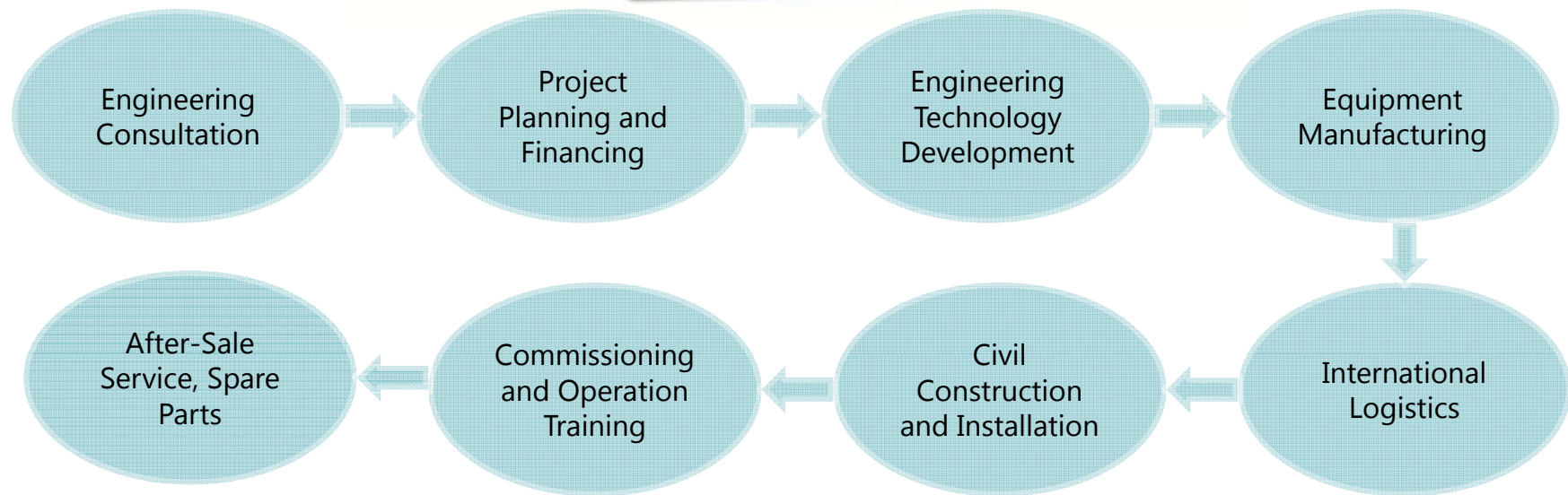
- The combined credit of CBMI is over USD 2.4 billion, provided by the 4 major banks in China: Bank of China, Bank of Communication, China Construction Bank and HSBC.
- Sinosure is the only financial institution in China that undertakes policy-oriented credit insurance business. As a strategy partner of CBMI, it provides project credit insurance and financing solutions.
- Depend on the financing capability, CBMI can help owners finance for industrial construction projects.

Main Customers



Business Scope

With the main business of general contracting of industrial engineering, and a complete EPC service chain, CBMI carry out engineering consultation, design and research, equipment manufacturing, logistics transportation, civil construction and installation engineering construction, production commissioning, spare parts, after-sale service, production management and other business to provide customers with EPC general contracting and EPC-OM, EPC- F and other personalized project contracting service. The company's business involves industrial construction, metallurgy, power, municipal, environmental protection and other industrial engineering fields.



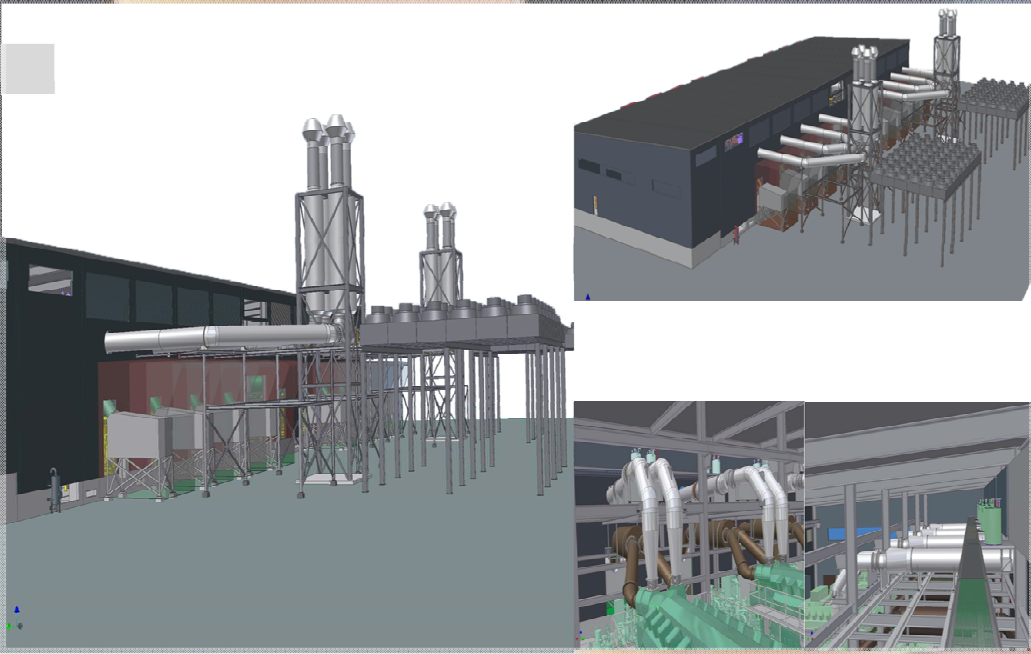


2



Ability & Qualification

Technology Development

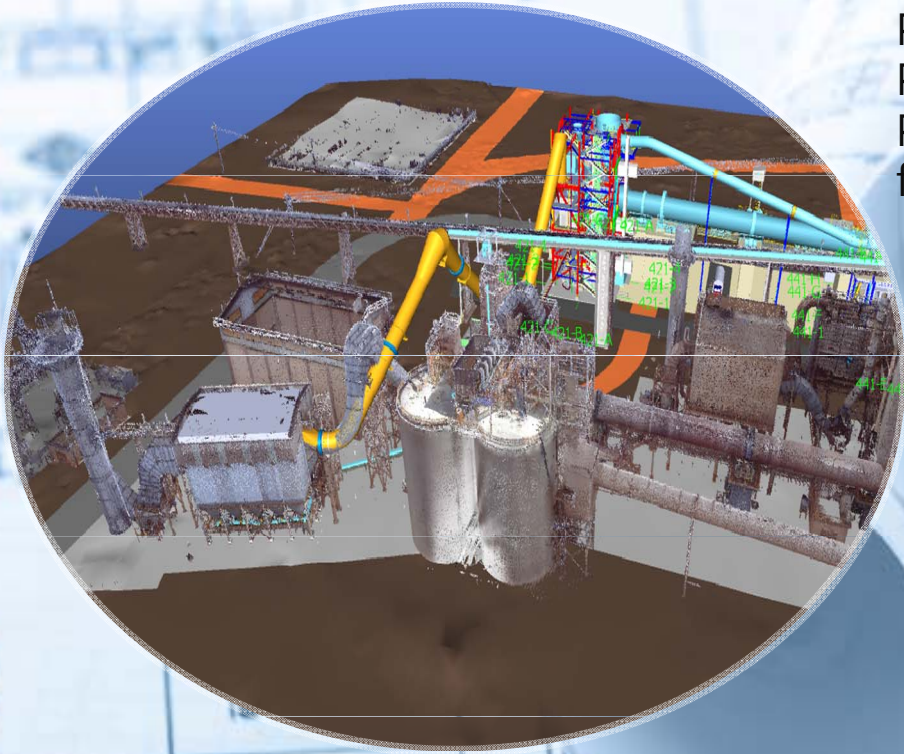


3D design and BIM technology integrate project management functions to achieve collaborative design, which greatly improves the efficiency of site construction and better meets the needs of international project.

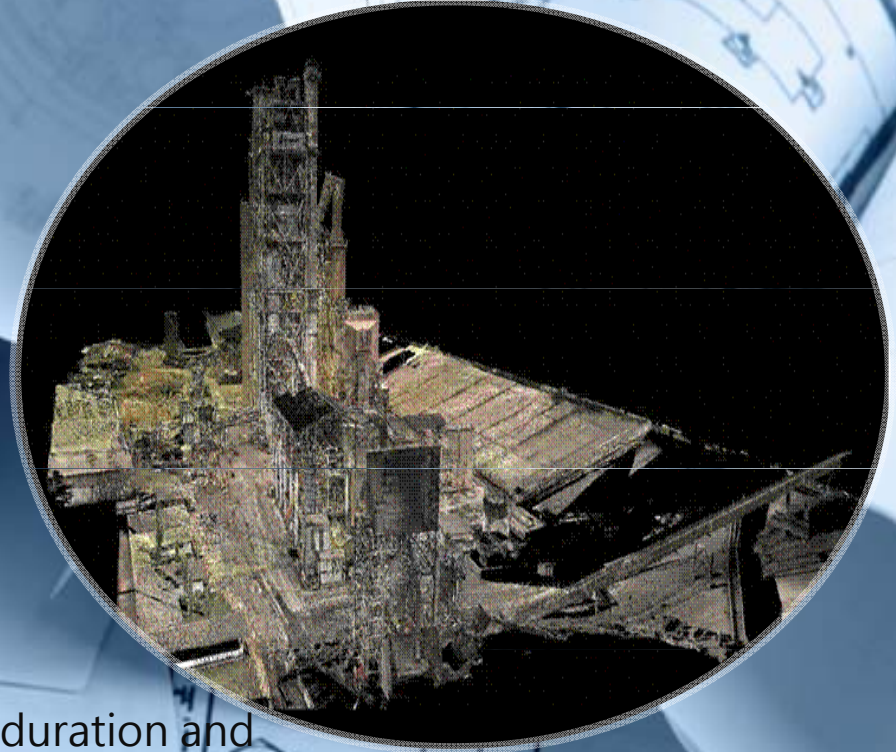
- Over **30** technical patents have been granted by technical research and development team.
- With the establishment of digital 3D platform, CBMI has gradually completed the engineering standard material library with Chinese, USA and European standard, and built a life cycle digital factory.



Digital Design



Point Cloud Model of CEMEX 3500 TPD Cement Project in Philippines
Professional 3D design, interaction with owner to complete factory audit and validation.



Point Cloud Model of LH Project in Nigeria
Through digitized management, monitor design, cost, duration and other elements.

Fabrication



- Fabrication Base near Seaport
- Localized material procurement and on-site fabrication according to project characters
- Advanced production equipment and manufacturing technology
- Rich experience in steel structure and equipment design and manufacturing
- Products meet the international standards of China(GB), the United States(AWS), Russia(GOST), Australia(AS), Germany(DIN), Europe(EN), etc.

Equipment Integrating

- 220 mm CNC floor boring machine
- 4 x 13 m gantry boring and milling machine
- 10 m gear hobbing machine
- $\Phi 100$ mm integral cylinder drilling machine
- 150 x 2500 mm coiling machine
- 6 x 7 x 19 m heat treatment furnace
- 250 tons bridge crane



- Capacity **50,000** tons annual production
- Integral integrating capability of Large industrial Equipment
 - Advanced physical and chemical experiment and test equipment

Procurement

- Over **800** high-quality suppliers located on five continents in the world
- In 2018, **\$280** million dollars purchase amount, **2534** contracts were signed
- Supplier Access and Evaluation System, Localized Logistics Supplier Network
- Project-centered Procurement Planning for Different Projects
- Advanced Purchasing Platform, Purchasing System and Purchasing Management

Main Suppliers

SIEMENS

Schneider
Electric

ABB

BEUMER GROUP

Redecam
Group

AAF
INTERNATIONAL

HAVER & BOECKER

IBAU
HAMBURG

BEDESCHI

ThyssenKrupp

HAZEMAG

FLENDER

IKN
ENGINEERING THE FUTURE

AUMUND

fivespillard

SCHENCK

Logistics

- Total shipment volume of 2018 is 210,000 cubic meters/ 76,000 tons, export amount about 320 million US dollars.



- Logistics Supplier Access and Evaluation System, Localized Logistics Supplier Network
- According to the project conditions of EXW, FCA, DDP, FOB and CFR, one-stop logistics service can be realized through various logistics modes.
- Professional Supervision Team, Scientific Loading Scheme, Detailed Risk Control Scheme
- Monitoring Goods through Digital Logistics Platform

Civil Engineering



Effective Combination of Construction and Design

- Optimizing the quantity of work
- Advantages of localized implementation of global projects
- Various construction environments such as extremely high and low temperature, and complex natural environment and geological conditions of project sites in Africa, South America and Europe



Whole civil engineering services involved in the field of Industrial construction:

- Deep Foundation Pit
- Pile Foundation
- Foundation construction (including Equipment Foundation)
- Superstructure
- Decoration

Steel Structure Erection

Erection reference over 100 projects in the world:

- Pre-heater (130m)
- Steel Chimney (140m)
- Gridding Structure (Φ 128m)
- Structure of Clinker Silo Top



Mechanical Installation

Complex installation works in industrial construction involve: lifting operations, work at height, hot works, confined space works and other different specialties.

Through close cooperation of the experienced and professional engineer team of CBMI, we complete installation safely and efficiently.



Integrated solutions of procurement, transportation, stacking, lifting and installation will be provided to different structures and process equipment.

Electrical Installation

- Installation and Laying of High and Low Voltage Cables of Industrial Buildings
- Installation and commissioning of electrical equipment for high and low voltage cabinets
- Installation and commissioning of automation Instruments
- Installation and Commissioning of General Downward Substation (110 KV)



Refractory and Insulation



- Refractory works for Various Dynamic and Static Equipment



- Insulation works for various complex structure

General Layout Engineering

- General Layout
- Road Construction (Asphalt, Concrete and Other Roads)
- Rainwater, Sewage System and Process Pipeline
- Plant Greening



Operation & Commissioning

CBMI is responsible for organizing, coordinating, technical and management of the project commissioning by professional commissioning management and technical members.

Professional technical and management team will complete the pre-commissioning training, equipment linkage commissioning, load commissioning and other tasks for customers, and transfer the entire production line to the owner, provide follow-up personalized services for customers.

- Professional commissioning and installation workers can be quickly transferred to project production and operation
- Provide individualized and professional training for owners' production personnel
- High-quality commissioning service lays the foundation for the follow-up production and operation of the factory



A close-up photograph of a hand holding a bright yellow hard hat. The hand is positioned on the right side of the frame, with fingers wrapped around the top of the helmet. The background is blurred, showing what appears to be a construction or industrial setting with various equipment and structures.

After-Sale Service

As an international first-class general contracting service brand, CBMI has high-quality resources integration capabilities to provide customers with professional and personalized after-sale service after the completion of the project.

- Regular return-visit to provide reasonable production and operation suggestions for customers
- Specialized production and maintenance team provides free intelligent diagnostic service
- Diagnostic equipment and production line operation
- Provide equipment quality accident analysis report
- Complete replacement of faulty equipment
- Provide high quality and low-cost spare parts supply, technical transformation and other services

Certificates

ISO9001 Certificate

ISO14001 Certificate

ISO18001 Certificate



3



Safety, Environment and Health



Safety, Environment, Health

To ensuring the occupational health and safety of our employees, contractors and the public. Our vision is to integrate health, safety and environmental protection into our corporate culture.

- Perfect Safety Management System
- Safety Management Informatization
- All-Staff Training Program
- Development of Energy-Saving, Environmental Protection Technology
- Expanding Energy-Saving and Environmental Protection Business
- Improving Local Living Environment



A background image showing several hands of different skin tones cupping dark soil and small green seedlings, symbolizing growth and community.

4



Social Responsibility

Social Responsibility



CBMI joined the United Nations Global Compact Organization in 2005, promising to accept the concept of the Global Compact in respecting human rights, labor rights, environmental protection and anti-corruption. Our global employees regard fulfilling their territorial social responsibility as their obligations, support local public welfare undertakings and make positive contributions to promoting the development of regional economy and education undertakings.



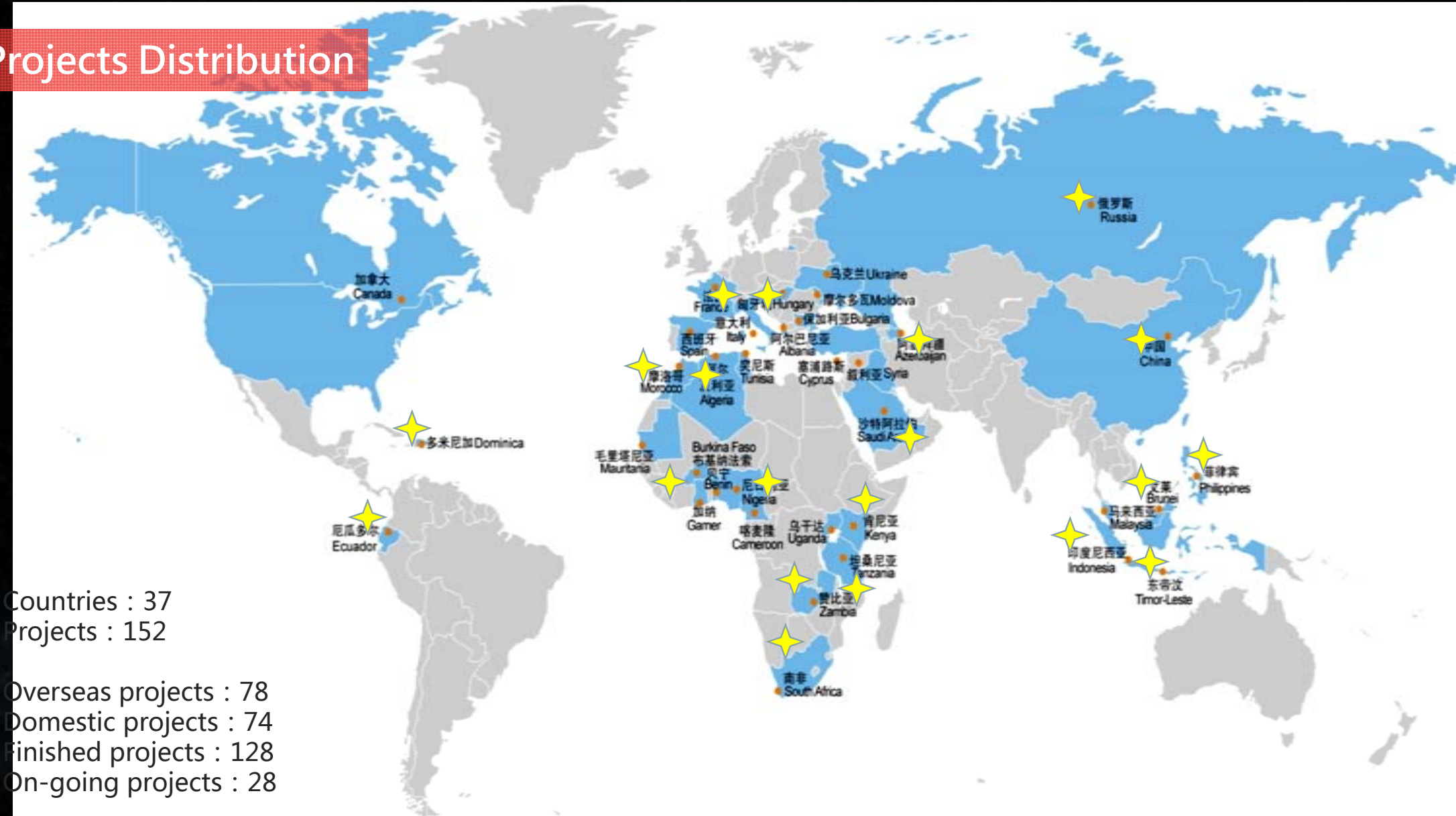
Visit the UN "Global Compact" website and read "CBMI Annual Social Responsibility Report" online. : <https://www.unglobalcompact.org>

5



Performance Display

Projects Distribution



Algeria



Algeria Oil Production Project (2018)



Algeria BISKRA 5000t/day cement plant project (2017)



Algeria ZAHANA cement plant (2016-2019)



Algeria BC 2x6000TPD project (2016-2018)

Nigeria



Nigeria EDO 6000TPD Cement Plant Project (2012-2014)



Nigeria EDO 2 Line 6000TPD Project (2016-2018)



Nigeria UNICEM 6000TPD Project (2016-2018)



Nigeria SOKOTO Project (2016-2018)

Zambia & South Africa



Zambia CHILANGA 2000TPD Project (2006-2008)



CNBM Zambia Industrial Park 2500t/day cement plant (2017)



South Africa PPC 3000TPD Project (2015-2018)



South Africa Rainbow 2000TPD Project (2006-2008)

Uganda · Kenya



Kenya NAI 1 million t/year cement project (2016-2018)



Uganda TOR 800,000 tons/year cement project (2016-



Uganda HIMA Cement Plant (2008-2011)

Saudi Arabia



Saudi Arabia SPCC 5000tons/day Cement Plant (2007)



Saudi Arabia RCC 5000TPD Cement Plant (2007)



Saudi Arabia SCC 10000tons/day(2x) cement Plant (2008)



Saudi Arabia CCC 5000TPD Cement Plant (2007)

Russia



Russia Lafarge FER 5000 tons/day cement plant (2011-2014)



Russia Great Wall Havarl Factory (2018-2019)



Russia Haval Factory External Network Project (2019)



Russia Haval Factory Pile Foundation Project (2016-2017)

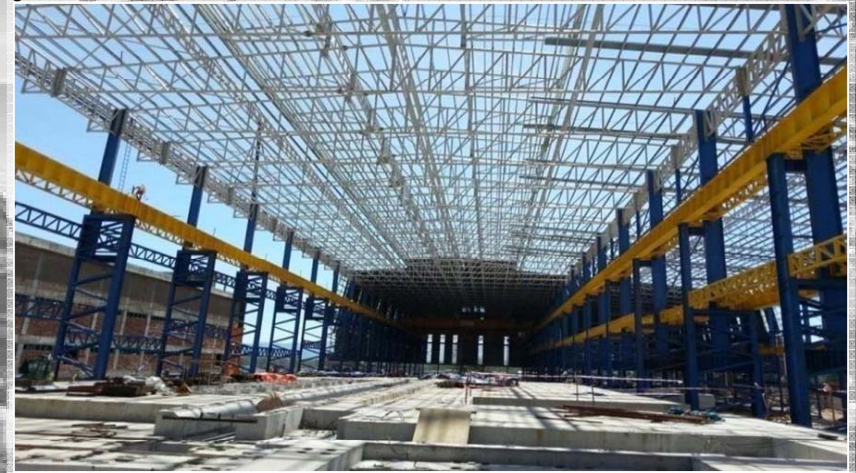
Malaysia



Malaysia RAPID 6A LLDPE Civil Construction Project (2016-2018)



Malaysia Oil Tanks Installation project (2013-2014)



Malaysia Steel Structure Installation Project (2015)

South America



Dominican General DOMICEM Project (2002-2004)



Dominican Holcim GU3 Project (2013-2015)



Ecuador LLAMA project (2006-2009)

Other Projects in Africa



Morocco SETTAT 4000TPD Cement Line Project



Tanzania TPCC 2500 TPD Project (2007-2009)



Benin NOCIBE Project (2012-2015)



Cameroon YAO 500,000 tons/year project (2016-2018)

Other Projects in Europe



Bulgaria Devnya 4000TPD Project (2012-



Hungary NOSTRA 2500TPD (2008-2010)



Spain FYM-MALAG 3300TPD (2004-2007)



France Bordeaux 5TPH Project (2005-2006)



Albania TITAN 3300TPD project (2007-



Italy RAGUSA Cement Plant (2002-2005)

Other Projects in Asia



Indonesia Heidelberg 10000TPD
Cement Plant (2014-2018)



Azerbaijan QAZAX 4000TPD
Project (2008-2011)



Saudi Arabia SPCC Heavy Oil Power
Plant Project (2015-2017)



East Timor Church Project (2016-2017)



China Changzhou 100TPD
hazardous waste disposal project (2017-2019)



China Suqian Sewage Treatment Project
(2013-2014)